



Project _____

Item No. _____

Quantity _____

GAS STEAM KETTLE- TILTING TWIN CONSOLE

| | |
|---------------|------------------------------------------------------|
| Model IGLT-20 | 20 gallon (76 litre) gas floor model tilting kettle |
| Model IGLT-30 | 30 gallon (114 litre) gas floor model tilting kettle |
| Model IGLT-40 | 40 gallon (151 litre) gas floor model tilting kettle |
| Model IGLT-60 | 60 gallon (227 litre) gas floor model tilting kettle |

CONSTRUCTION

- 304 stainless steel construction
- 2/3 jacketed with factory sealed distilled water enclosure
- Hemispherical design on bottom of kettle for superior heat circulation
- Drip proof stainless steel console
- Legs fitted with two hole adjustable flanged feet for securing to floor
- Self-locking tilt mechanism with trunnions connected to the gear and control consoles permit the kettle to tilt forward 90° for emptying
- Stainless steel control housing
- 316 stainless steel liner for 20, 30 and 40 gallon models
- High efficiency power burner system

OPERATION

- Integrally mounted controls
- Power switch
- Pressure switch
- Direct immersion thermostat
- Water sight glass
- Cook indicator light
- Pressure gauge
- Low water light
- Low water shut off
- Pressure relief valve
- 165-275°F (74-135°C) temperature range
- 50 PSI maximum pressure

STANDARD FEATURES

- Manual control
- 120 VAC, 1 phase, 60 Hz
- One year parts and labor warranty



OPTIONS AND ACCESSORIES

(AT ADDITIONAL CHARGE)

Faucets

- Single pantry faucet with swing spout
- Double pantry faucet with swing spout

Draw Off valves and accessories

- 2" (50 mm) draw off valve
- 3" (76 mm) draw off valve
- 2" (50 mm) dairy valve
- 3" (76 mm) dairy valve
- Perforated strainer for draw off
- Solid stainless steel disc for draw off valve

Etched markings

- Gallons
- Litres
- Spring assist hinged stainless steel cover
- Correctional package
- 316 stainless steel liner for 60 gallon models
- 220 VAC, 1 phase, 50 Hz
- Graduated measuring strip
- Strainer hook
- Pour strainer
- Tri-basket assembly

IGLT | GAS STEAM KETTLE- TILTING TWIN CONSOLE

MAXIMUM INPUT:

| | |
|---------|-------------|
| IGLT-20 | 80,000 BTU |
| IGLT-30 | 100,000 BTU |
| IGLT-40 | 100,000 BTU |
| IGLT-60 | 120,000 BTU |

POWER SUPPLY:

120 VAC, 1 phase, 60 Hz, 2-wire w/ ground

GAS SUPPLY:

3/4" IPS supply line required

Minimum Inlet Pressure:

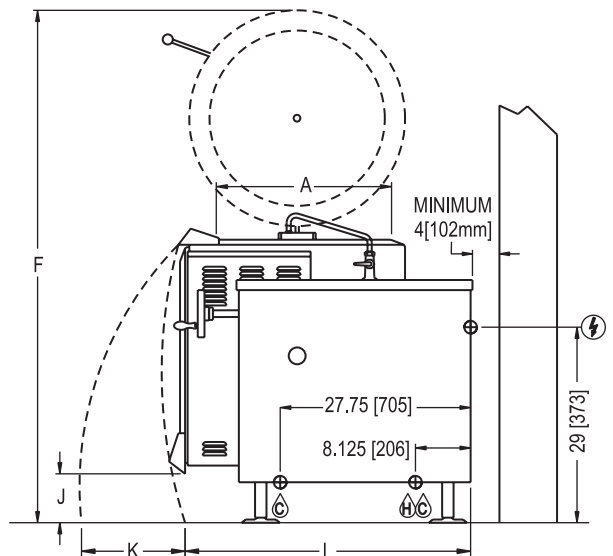
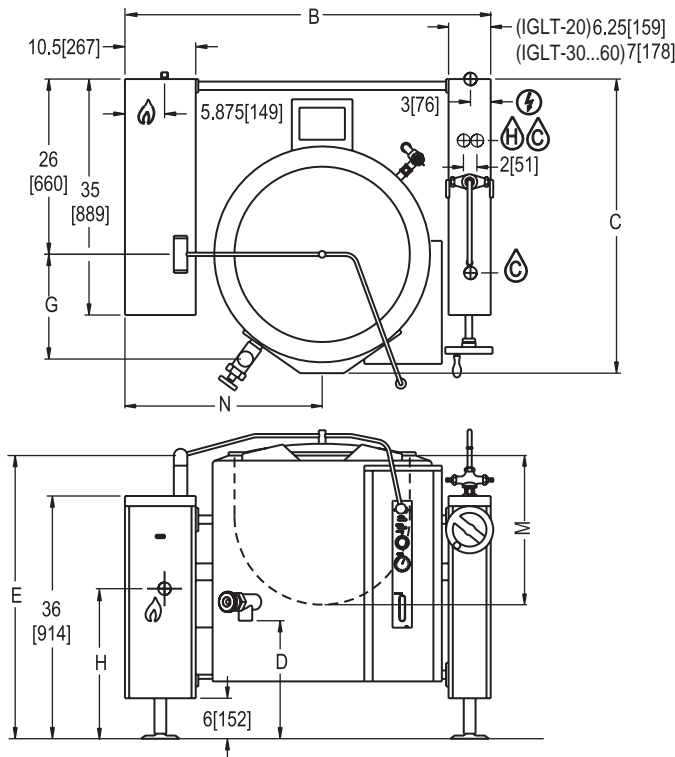
| | |
|---------|---------------------------|
| Natural | 6.0" W.C. static to unit |
| Propane | 11.0" W.C. static to unit |

MAXIMUM PRESSURE:

All models 50 PSI (345kPa)

SHORT FORM SPECIFICATIONS

Provide Intek model IGLT-20, IGLT-30, IGLT-40 or IGLT-60 gas fired tilting kettle. The controls shall be integrally mounted and shall include a power switch, direct immersion thermostat water sight glass with range of 165-275°F (74-135°C), a cook indicator light, pressure gauge, pressure relief valve, low water light and low water shut off. The unit shall have a double wall interior to form a steam jacket around the lower 2/3 of the kettle. The jacket enclosure shall contain distilled water which is factory sealed. The bottom of the kettle shall be of hemispherical design for superior heat circulation. The console shall be drip proof, stainless steel clad and shall be mounted on 6" legs fitted with two hole adjustable flanged feet for securing to floor. The unit shall pivot on trunnions connected to the tilt mechanism and the outbore bearing connected to the gear and control consoles and shall permit the kettle to tilt forward a full 90° for complete emptying. The tilt mechanism shall be self locking for positive stop action. Construction shall be of all welded satin finish 304 stainless steel. Unit shall be ASME code stamped and National Board registered. Provide options and accessories as indicated.



DIMENSIONS ARE IN INCHES [MM]

| MODEL | A | B | C | D | E | F | G | H | J | K | L | M | N |
|---------|---------|-------------|-------------|------------|-------------|------------|-----------|------------|----------|---------|------------|------------|-----------|
| IGLT-20 | 20[508] | 41.13[1222] | 40.63[1032] | 19[483] | 40.13[1019] | 76.5[1943] | 16.5[419] | 24[610] | 11[279] | 22[559] | 40.5[1029] | 18.38[467] | 25.5[648] |
| IGLT-40 | 26[660] | 55.25[1403] | 43.63[1108] | 16.5[419] | 43.25[1099] | 76[1930] | 15.5[394] | 22.25[565] | 7.5[191] | 23[584] | 42.5[1080] | 22.13[562] | 28.5[724] |
| IGLT-60 | 30[762] | 59[1499] | 45.63[1159] | 17.88[454] | 43.88[1115] | 82[2083] | 19.5[495] | 22.25[565] | 5.5[140] | 23[584] | 45.5[1156] | 24.75[629] | 30.5[775] |

INTEK MANUFACTURING, LLC

1300-D Airport North Office Park • Fort Wayne, IN • 46825
Sales: 800-875-1740 • Service: 877-482-7150 • Fax: 260-416-6120