



Project \_\_\_\_\_

Item No. \_\_\_\_\_

Quantity \_\_\_\_\_

## GAS STEAM KETTLE- STATIONARY QUAD-LEG

Model IGL-80      80 gallon (303 litre) gas quad-leg kettle  
Model IGL-100    100 gallon (379 litre) gas quad-leg kettle

### CONSTRUCTION

304 stainless steel construction  
2/3 jacketed with factory sealed distilled water enclosure  
Stainless steel control housing

### OPERATION

Integrally mounted controls  
Power switch  
Direct immersion thermostat  
Water sight glass  
Cook indicator light  
Pressure gauge  
Safety gas shut off valve  
Low water light  
Low water shut off  
Pressure relief valve  
Electronic ignition  
Pressure switch  
165-265°F (74-130°C) temperature range  
35 PSI maximum pressure

### STANDARD FEATURES

Manual control  
6" (152 mm) stainless steel adjustable legs  
2" tangent draw off  
Spring assist hinged stainless steel cover  
115 VAC, 1 phase, 60 Hz  
One year parts and labor warranty



### OPTIONS AND ACCESSORIES

(AT ADDITIONAL CHARGE)

#### Voltage options

208-240 VAC, 1 phase, 60 Hz  
220 VAC, 1 phase, 50 Hz

#### Faucets

Single pantry faucet with swing spout  
Double pantry faucet with swing spout

#### Draw Off valves and accessories

3" (76 mm) draw off valve  
2" (50 mm) dairy valve  
3" (76 mm) dairy valve  
Perforated strainer for draw off  
Solid disk strainer for draw off

#### Etched markings

Gallons  
Litres  
Correctional package  
316 stainless steel liner  
Graduated measuring strip  
Strainer hook  
Tri-basket assembly



# IGL | GAS STEAM KETTLE- STATIONARY QUAD-LEG

## MAXIMUM INPUT:

IGL-80	150,000 BTU
IGL-100	150,000 BTU

## POWER SUPPLY:

115 VAC, 1 phase, 60 Hz, 2-wire w/ ground  
6' (1.8 m) electric cord set furnished

## GAS SUPPLY:

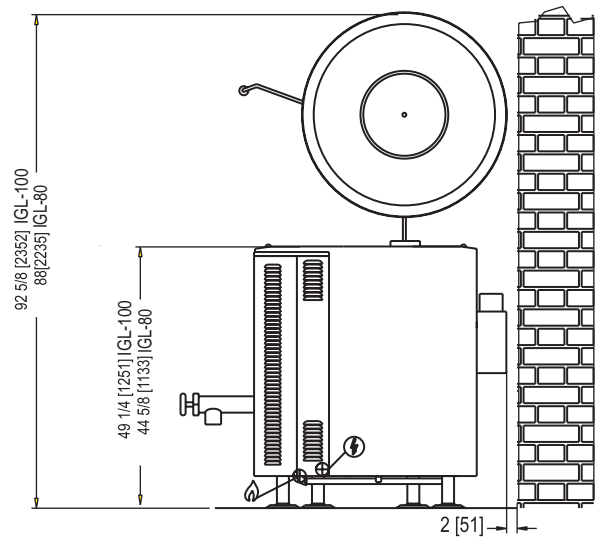
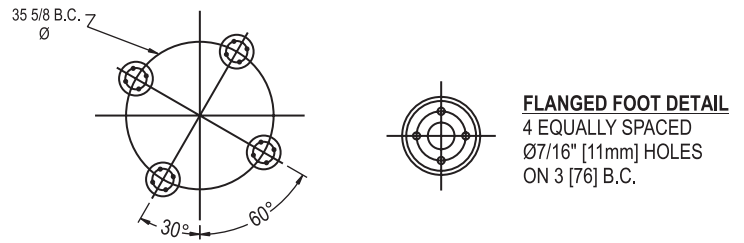
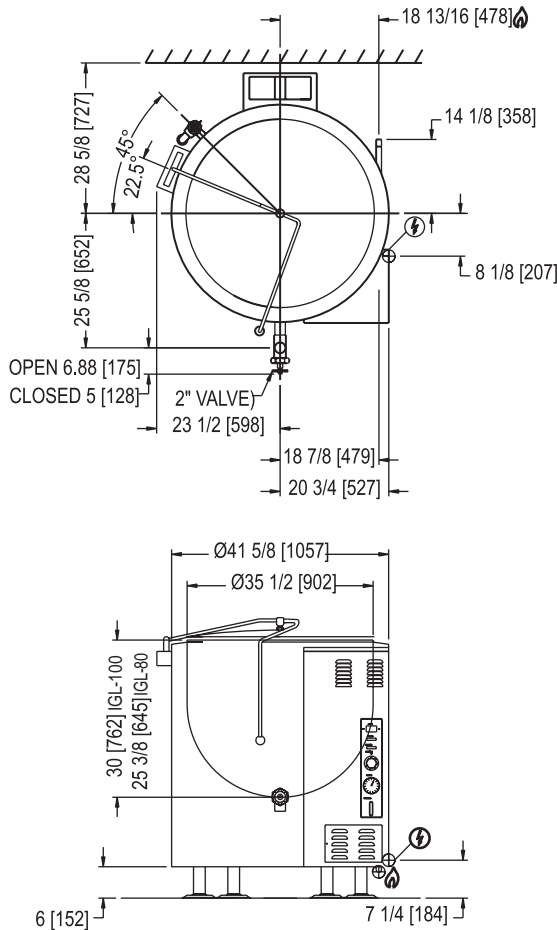
One 1" male connection required

### Minimum Inlet Pressure:

Natural	7.0" W.C. static to unit
Propane	11.0" W.C. static to unit

## SHORT FORM SPECIFICATIONS

Provide Intek model IGL-80 (80 gallon) or IGL-100 (100 gallon) gas fired quad-leg stationary kettle. The controls shall be integrally mounted and shall include a power switch, electronic ignition, direct immersion thermostat with a range of 165-265°F (74-130°C), a cook indicator light, pressure gauge, safety gas shut off valve, pressure relief valve, low water light and low water shut off. The unit shall have a double wall interior to form a steam jacket around the lower 2/3 of the kettle. The jacket enclosure shall contain distilled water which is factory sealed. The bottom of the kettle shall be of hemispherical design for superior heat circulation. Construction shall be of all welded satin finish 304 stainless steel. The unit shall have 6" stainless steel adjustable legs, a 2" tangent draw off valve, and a spring assist cover. The recessed control panel is located on the front side of the unit in full view of the operator and is easy to use. Unit shall be ASME code stamped and National Board registered. Provide options and accessories as indicated.



DIMENSIONS ARE IN INCHES [MM]