



Project \_\_\_\_\_

Item No. \_\_\_\_\_

Quantity \_\_\_\_\_

### ELECTRIC COUNTER ROUND TILT SKILLET

Model IECTRS-16 16 gallon electric round tilting skillet

#### CONSTRUCTION

- Satin finish 10 gauge stainless steel pan with polished interior
- Coved corners
- Pan slopes outward for easy access to cooking surface
- 3/8" thick stainless steel clad plate
- 7.5 kW heating elements are clamped to plate to ensure even heat transfer over entire cooking surface
- Stainless steel control housing
- Side pivots for tilting
- Tilting handle with heat proof knob
- Concealed mounting lugs for bolting unit to counter top or stand

#### OPERATION

- Integrally mounted controls
- Power switch
- Thermostat
- Cook indicator light
- High temperature cut-off
- 160-445°F (71-229°C) temperature range

#### CAPACITY

16 gallon (60 litres)

#### STANDARD FEATURES

- Side pivots and tilting handle
- Manual control
- Mounts to countertop
- Standard voltage options
  - 208 VAC, 1 or 3 phase, 50/60 Hz
  - 220 VAC, 1 or 3 phase, 50/60 Hz
  - 240 VAC, 1 or 3 phase, 50/60 Hz
  - 220/380 VAC, 3 phase, 4 wire
  - 240/415 VAC, 3 phase, 4 wire
- One year parts and labor warranty



Shown with optional stand

#### OPTIONS AND ACCESSORIES (AT ADDITIONAL CHARGE)

##### Voltage options

- 380 VAC, 3 phase, 50/60 Hz
- 415 VAC, 3 phase, 50/60 Hz
- 220/380 VAC, 4 wire, 3 phase, 50/60 Hz
- 240/415 VAC, 4 wire, 3 phase, 50/60 Hz
- 480 VAC, 3 phase, 50/60 Hz
- 600 VAC, 3 phase, 60 Hz

##### Stands

- 18" (46 mm) high stainless steel stand with sliding shelf
- 18" (46 mm) high stainless steel stand with sliding drawer and stationary drain connection

##### Faucets

- Single pantry faucet with swing spout
- Double pantry faucet with swing spout

##### Etched markings

- Gallons
- Litres
- Steam pan insert
- Lift off cover



# IECTRS | ELECTRIC COUNTER ROUND TILT SKILLET

## MAXIMUM INPUT:

IECTRS-16 7.5 kW

## POWER CONNECTION:

Refer to data plate.

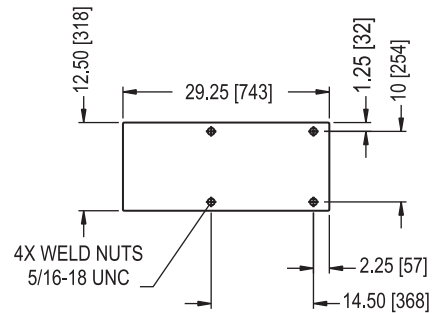
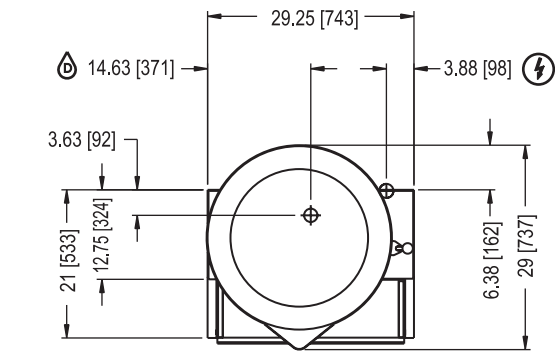
## DRAIN CONNECTION:

1-1/2" (38mm) 11-1/2 NPT for stand

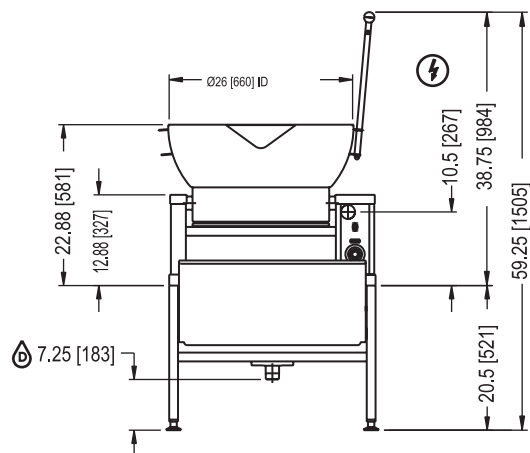
## SHORT FORM SPECIFICATIONS

Provide Intek model IECTRS-16, 16 gallon (60 litre) electrically heated counter round tilting skillet. The controls shall be integrally mounted in the stainless steel housing and shall include a power switch, thermostat with range of 160-445° F (71-229° C), a cook indicator light and high temperature cut-off. The unit shall have a one-piece covered corner, 10 gauge stainless steel pan with satin finish exterior and polished interior. The pan sides shall slope outward to facilitate access to the cooking surface which shall be a 3/8" thick stainless steel clad plate, fitted with clamped on 7.5 kW electric heating elements, ensuring even heat transfer over entire cooking surface. The pan shall be mounted on side pivots to allow tilting for complete removal of contents by means of a tilting handle with heat proof knob. Provide options and accessories as indicated.

MODEL	kW	PHASE	AMPS PER LINE					
			208V	220V	240V	380V	415V	480V
IECTRS-16	7.5	1	36.0	34.1	31.3	N/A	N/A	N/A
		3	20.8	19.7	18.1	11.4	10.4	9.0

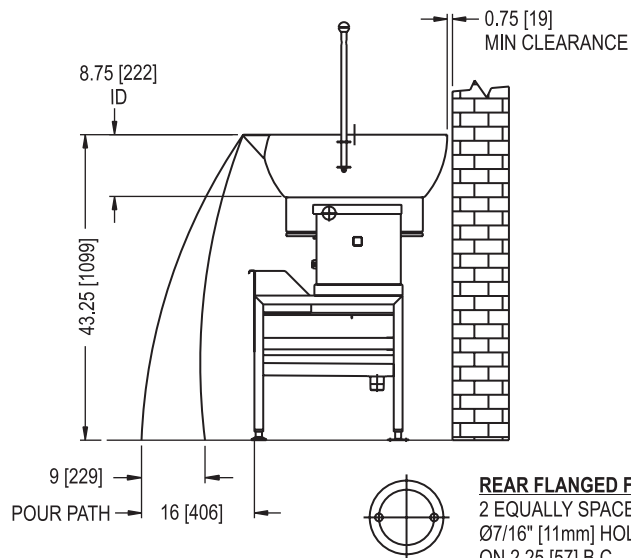


FRONT OF APPLIANCE  
MOUNTING PATTERN



Shown with optional stand.

DIMENSIONS ARE IN INCHES [MM]



**REAR FLANGED FOOT DETAIL**  
2 EQUALLY SPACED  
Ø7/16" [11mm] HOLES  
ON 2.25 [57] B.C.