



Project _____

Item No. _____

Quantity _____

DIRECT STEAM TRI-LEG TILTING KETTLE

Model	Capacity	
IDLT-20	20 Gallon	76 Litre
IDLT-30	30 Gallon	114 Litre
IDLT-40	40 Gallon	151 Litre
IDLT-60	60 Gallon	227 Litre
IDLT-80	80 Gallon	303 Litre
IDLT-100	100 Gallon	379 Litre

SPECIFICATIONS

Shall be an Intek Model _____ direct steam connected tri-leg tilting kettle. A double wall kettle interior shall form a steam jacket around the lower 2/3 of the kettle. The bottom of the kettle shall be of hemispherical design for superior heat circulation.

The tri-leg mounting frame of stainless steel pipe shall support the kettle and tilt console and conceal the steam piping, house the steam control valve and tilt mechanism. Each leg shall be fitted with a 4 hold adjustable flanged foot for securing to the floor. The tilt mechanism shall permit the kettle to tilt forward a full 90 degrees for complete emptying. The tilting mechanism shall be self locking for positive stop action.

Construction shall be all welded #4 finish stainless steel type 304. The liner on models 20 through 40 gallon shall be standard 316 for high acid content cooking.

OPERATION

Direct steam at a minimum of 5 PSI (34 kPa) and a maximum of 35 PSI (241 kPa).



OPTIONS AND ACCESSORIES (AT ADDITIONAL CHARGE)

- Type 316 stainless steel liner for high acid content cooking on models 60 through 100 gallon
- 50 PSI high pressure operation for higher cooking temperature
- 1-1/2" draw off valve
- 2" draw off valve
- 3" draw off valve
- 2" dairy valve
- 3" dairy valve
- Spring assist hinged stainless steel cover
- Etched gallon markings
- Etched litre markings
- Pan carrier (20-30 gallon)
- One piece stainless steel cover
- Triple basket assembly
- Steam trap assembly
- Single pantry faucet with swing spout
- Double pantry faucet with swing spout
- Perforated strainer for draw off valve
- Solid disc for draw off valve
- Strainer hook
- Graduated measuring strip
- Pan carrier (40 -100 gallon)



IDLT | DIRECT STEAM TILTING KETTLES

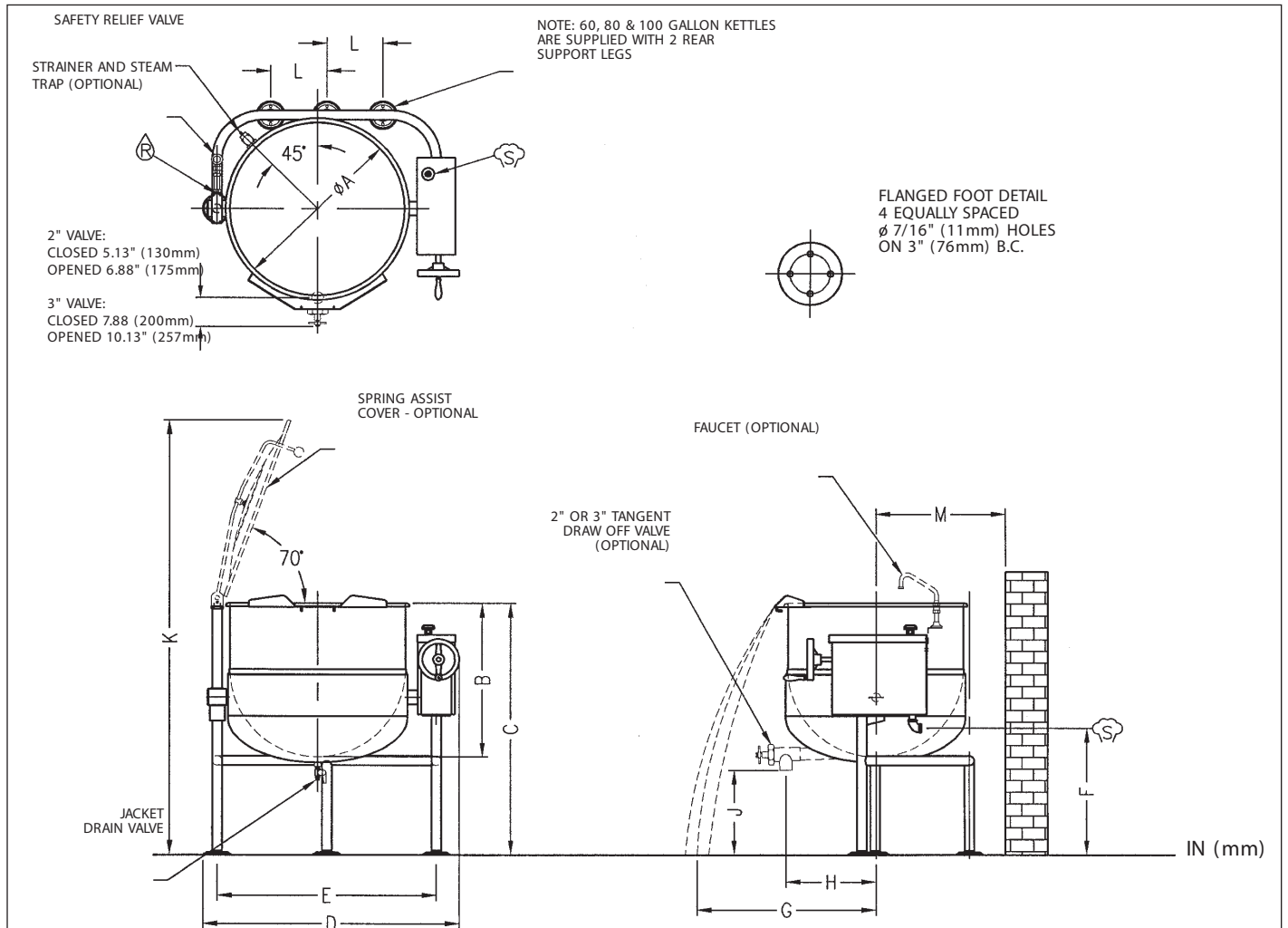
SERVICE CONNECTIONS

 - STEAM SUPPLY: 3/4" IPS (19 mm)

 \varnothing CONDENSATE RETURN: 1/2" IPS (13 mm)

DIMENSIONS

MODEL	CAPACITY	UNITS	A	B	C	D	E	F	G	H(2")	H(3")	J(2")	J(3")	K	L	M
IDLT-20	20 U.S. gal. 76 litres	inches mm	21 535	18 460	37 940	34.75 885	28.5 724	22 559	25.63 651	12 305	13.25 337	17 432	16.5 419	59.5 1512	\varnothing	15.38 391
IDLT-30	30 U.S. gal. 114 litres	inches mm	24 610	20 510	37 940	37.75 960	31.5 800	20.75 527	27.13 689	12.5 317	14.25 362	15 381	14.5 368	62.5 1588	\varnothing	15.38 391
IDLT-40	40 U.S. gal. 152 litres	inches mm	26 660	22.5 570	37 940	39.75 1010	33.5 850	20.25 514	28.63 727	13 330	15.25 387	12.5 318	12 305	64 1626	\varnothing	16.38 416
IDLT-60	60 U.S. gal. 227 litres	inches mm	29.5 750	26 660	40.5 1029	43.25 1100	37 940	21.5 546	30.13 765	13.75 350	15.5 394	14.5 368	14 356	74 1879	9.5 241	18.38 467
IDLT-80	80 U.S. gal. 303 litres	inches mm	33 840	28 710	42.5 1080	46.75 1085	40.5 1030	20 508	32.63 828	14.5 368	16.25 413	12.5 318	12 305	76 1930	11 279	19.88 505
IDLT-100	100 U.S. gal. 379 litres	inches mm	35.5 902	30 762	42.5 1080	49.25 1251	43 1092	27 686	39.25 997	18 457	20.25 514	10.5 267	10 254	79 2007	12.5 318	21.5 546



INTEK MANUFACTURING, LLC

1300-D Airport North Office Park • Fort Wayne, IN • 46825

Sales: 800-875-1740 • Service: 877-482-7150 • Fax: 260-416-6120